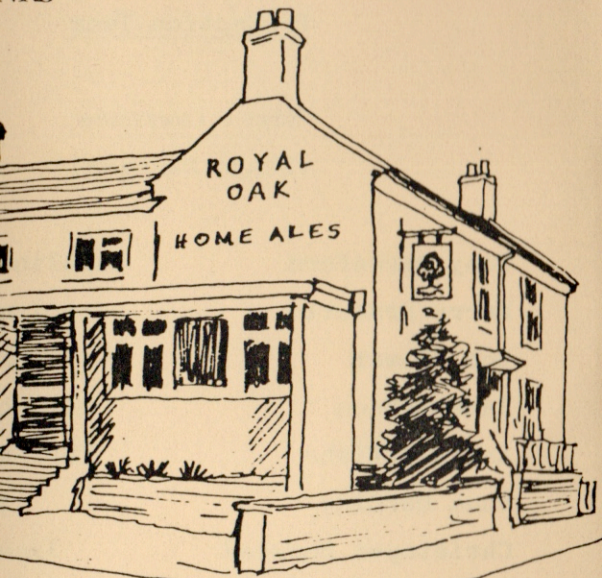


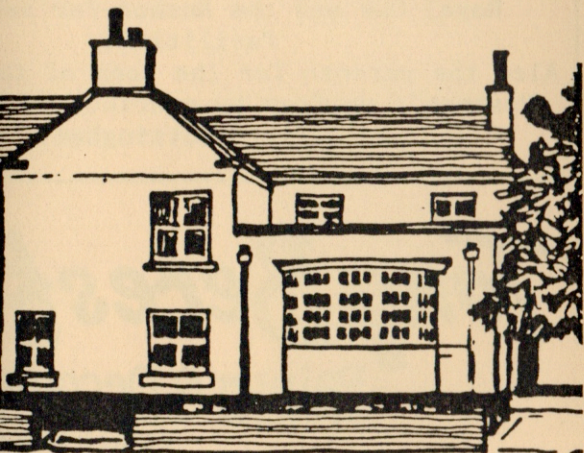
NKS



... for rehearsal facilities

the Post Office for selling the tickets.

ers General Store



Room
of the Anchor, Gunthorpe

Previous Productions

- White Liars
- Heaven On Earth
- Plaza Suite
- The Taxpayers Waltz
- Flowering Cherry
- Relatively Speaking
- Blithe Spirit
- Gaslight
- Chester Miracle Play
- See How They Run
- A Resounding Tinkle
- Black Comedy
- Table Manners
- I'll Get My Man
- Bell, Book & Candle
- The Unexpected Guest
- The Happy Apple
- Outside Edge
- A Letter From The General
- Move Over Mrs Markham
- Semi-Detached
- When We Are Married
- It'll Be Alright On The Night
- Just Between Ourselves
- Who Killed Santa Claus
- She's Done It Again
- Breath Of Spring
- Hobson's Choice
- Friends & Neighbours

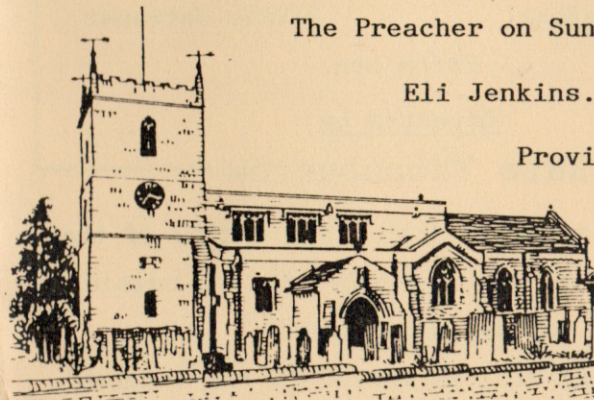
and Several Poetry Evenings

The Preacher on Sunday will be

Eli Jenkins.....

Provided you are

all there!



MAY 1987

EAST BRIDGFORD DRAMA GROUP

present

UNDER MILK WOOD



by Dylan Thomas

Director's Note

his thirty-ninth birthday
Thomas died and left for
poems, stories, etc., and
st known work "Under Milk
n as a play for voices, we
version with the characters
oming to life.

oven around the people who
little fishing town of
to be read backwards for a
what the play is about), and
arded as a Welsh play the
cribed are probably present
unities all over the world.

avily on your imagination to
of Llareggub on the Village
hope we have done this well
that the characters are
tly enough to enable you to
enjoyment of this play.

ate Thornburrow

UNDER MILK WOOD

by Dylan Thomas

The action of the play takes place on one day in the seaside town of Llareggub.

The Narrators

John Merry Janet Morris

The Players

Malcolm Cope John Preston
Dave Darby Vicky Rees
Mike Geisow Peter Salter
Alan Haydock Jean Starbuck
Christine Jackson Janice White
Kim Levis Pete Thornburrow
Mark Pilgrim Gwynne Williams
Jean Preston Molly Wood

The Children

Philip Hailes Hannah Teare
Stephen Hailes Henry Teare
Sally Haydock Joanne Warrener

Sarah Lee

Directed by

Kate Thornburrow

The play is in two Acts. The ending of the First Act will be indicated by the raising of the House Lights.

Refreshments will be served in the Interval.

Production Team

Nigel Lawrence

(Stage Manager)

Tony Beresford Caroline
Kerry Dracott Carolyn
Bob Flower John
Jane Gibson Marion
Ann Griffiths Mark W
Suma Harding D
Christoper Henwood Jane
Sarah Henwood Glyn
David Jackson Tim

Sylvia Collingham

and members of the Cast

The Drama Group wishes to thank all who have helped with this production, the Post Office for selling tickets Royal Oak and the Anchor for reh facilities.

Also the parents for the loan of the Postman's uniform by courtesy of H Office, Nottingham.

Tony Beresford

Painter & Decorator
The White House Main Street East Bridgford
Tel. East Bridgford 20

Director's Note

A few days after his thirty-ninth birthday in 1953, Dylan Thomas died and left for posterity his poems, stories, etc., and perhaps his best known work "Under Milk Wood". Written as a play for voices, we present a stage version with the characters coming to life.

The story is woven around the people who live in the little fishing town of Llareggub (to be read backwards for a description of what the play is about), and although regarded as a Welsh play the characters described are probably present in small communities all over the world.

We must draw heavily on your imagination to create the town of Llareggub on the Village Hall stage. I hope we have done this well enough, and that the characters are portrayed expertly enough to enable you to share our enjoyment of this play.

Kate Thornburrow

UNDER MILK WOOD

by Dylan Thomas

The action of the play takes place on one day in the seaside town of Llareggub.

The Narrators

John Merry Janet Morris

The Players

Malcolm Cope John Preston
Dave Darby Vicky Rees
Mike Geisow Peter Salter
Alan Haydock Jean Starbuck
Christine Jackson Janice White
Kim Levis Pete Thornburrow
Mark Pilgrim Gwynne Williams
Jean Preston Molly Wood

The Children

Philip Hailes Hannah Teare
Stephen Hailes Henry Teare
Sally Haydock Joanne Warrener

Sarah Lee

Directed by

Kate Thornburrow

The play is in two Acts. The ending of the First Act will be indicated by the raising of the House Lights.

Refreshments will be served in the Interval.

Production Team

Nigel Lawrence
(Stage Manager)

Tony Beresford	Caroline
Kerry Dracott	Carolyn
Bob Flower	John
Jane Gibson	Marion
Ann Griffiths	Mark W
Suma Harding	D
Christoper Henwood	Jane
Sarah Henwood	Glyn
David Jackson	Ti

Sylvia Collingham
and members of the Cast

The Drama Group wishes to thank all who have helped with this production, the Post Office for selling tickets at Royal Oak and the Anchor for reh facilities.

Also the parents for the loan of the Postman's uniform by courtesy of H Office, Nottingham.

Tony Beresford
Painter & Decorator
The White House Main Street East Bridgford
Tel. East Bridgford 20

east bridgford drama group present

under milk wood

by
dylan
thomas



wed-sat 27-30

may

7:30pm

tickets available from Post Office



Poetic drama

Vicky Rees plays Mrs Organ Morgan, Kim Levis plays barmaid Polly Garter and Mike Geisow plays Captain Cat in East Bridgford Drama Group's presentation of Dylan Thomas' *Under Milk Wood* in the village hall from Tuesday to Saturday. Kate Thornburrow directs.

Rich source of village life Under Milk Wood

DYLAN THOMAS' *Under Milk Wood* is the unusual choice of East Bridgford Drama Group for their latest production.

Originally written for radio, this play for voices has established itself as a classic, an evocative account of a day in a Welsh seaside village.

Like all villages it has a rich variety of characters, from blind Captain Cat, who 'sees' everything that goes on, to Mrs Ogmores-Pritchard and Polly Garter, "no better than she should be", from Butcher Beynon to the Rev Eli Jenkins, the poet who absent-mindedly dips his pen in his cocoa.

East Bridgford's actors will have the chance to show their versatility in a wide range of parts, directed by Kate Thornburrow.

It is a departure from their usual fare, but this beautiful, moving and funny play should bring delight to their patrons.

It was like watching a beautiful painting coming to life, colour and excitement stepping from a golden framework of words.

Congratulations to EBDG. If he had been there, Dylan Thomas would have raised his glass and said:

*And boskier woods
more blithe with spring
And bright with birds'
adorning,*

*And sweeter bards
than I do sing*

*Their praise this
beauteous morning.*

JOAN WALLACE

Fremount Drive,
Beechdale,
Nottingham.

Sweet bard

"A PIECE for Radio" they said in the Fifties, and *Under Milk Wood* drifted out of the air waves enchanting the listener with its beautiful words.

East Bridgford Drama Group put these words into the mouths of very talented actors and actresses.

Excellent narrators transported the audience and set us down among the delightful inhabitants of Llareggub, the fishing town created in the mind of Dylan Thomas.







